

CMLMS  
P.O. Box 24202  
Lansing, Michigan 48909

**TIME VALUE  
FIRST CLASS**

# Rockhound News— April 2021

Official publication of the  
**Central Michigan Lapidary and Mineral Society**  
Affiliated with MWF and AFMS



# Rockhound News

This bulletin is the official publication of the Central Michigan Lapidary and Mineral Society of greater Lansing, Michigan. It is published each month except July and August.

The Central Michigan Lapidary and Mineral Society is a non-profit organization, meeting to promote interest and increased knowledge in the fields of mineralogy, geology, paleontology and the lapidary arts. It was organized in May 1957 and celebrated its 50th Anniversary in 2007.

**Meeting place: Masonic Center, 2175 Hamilton Street, Okemos, MI**

**Regular meeting date: Third Thursday, except July and August**

**Meeting time: 7:00 p.m., doors are open at 6:30 p.m.**

**Annual Dues: Adults \$10.00; Families \$15.00; Students under 18 \$2.00**

**Board meetings: First Thursday, except July and August; 7:00 p.m., Okemos Library**

## OFFICERS 2021

President	Nate Krupp	517-626-1136 nathan.krupp1@gmail.com
Vice-President	Steve Smith	517-896-6048 radssmith@radssmith.com
Recording Secretary	Jake Chybowski	jcchybow@gmail.com
Corresponding Secretary	Theresa Hubbard	517-203-9620 thrshubbard@yahoo.com
Treasurer	Elaine Beane	517-272-9661 gebeane@comcast.net
1 Year Director	Jessica Clark	517-242-0554 clark.jess.leigh@gmail.com
2 Year Director	Lyle Laylin	517-488-7908 lyle18@gmail.com
3 Year Director	Sally Hedin	517-281-0575 sallyhedin@yahoo.com
Acting Roster Secretary	Elaine Beane ( <i>pro tem</i> )	517-272-9661 gebeane@comcast.net
Liaison Officer	VACANT	
Past President	Sue Casler	517-582-2466 casler5copper@gmail.com

## COMMITTEE CHAIRS 2021

Membership	Robin J. Smith	517-290-4891 rsmith@radssmith.com
Field Trips	Carl Mennare	517-599-1882 cmenn@yahoo.com
Publications	Chuck Taricska	517-331-1737 chuck_taricska@yahoo.com
Display	VACANT	
Education and Outreach	Theresa Hubbard	517-203-9620 thrshubbard@yahoo.com
Library	Jessica Clark	517-242-0554 clark.jess.leigh@gmail.com
Finance	Milt Gere	517-669-8116 miltgere@aol.com
Show	Robin J. Smith	517-290-4891 rsmith@radssmith.com
Show Co-Chair	Ernie Aughenbaugh	989-224-7619 esaslapidary@gmail.com
Web Master	Lyle Laylin	517-485-7908 lyle18@gmail.com

## Permanent Mailing Address

CMLMS

P.O. Box 24202

Lansing, Michigan 48909

**Club Website:** <http://www.michrocks.org>

## Affiliated With

Midwest Federation of Mineralogical and Geological Societies, <http://www.amfed.org/mwff/>

# ROCKHOUND NEWS

## **NEXT MEETING: In person meetings cancelled!!**

The CMLMS Board has voted to cancel membership meetings through April. Also at this time no May meeting is planned, at least not indoors. We are planning an outdoor meeting for June but playing it by ear. We feel this is the best option to maintain the health of our club. The board will keep the club updated of any changes. Stay safe and healthy.

All it took was a few nice days and my hostas, spring flowers and trees have jump started! I planted a bunch of bulbs last fall and they are also ready bloom any day now. I don't know about you, but I am ready to get out and explore this summer. I started looking into a trip to Penn Dixie in New York for fossil hunting and might make a trip in August, but my big adventure is coming up next month when I float down the Grand Canyon on a geology field trip. Hopefully will have a little slide show for a future meeting.

### **Calendar for Spring 2021**

April- No in person activities planned

May- in person meeting cancelled

June- Planning possible outdoor meeting, TBA

[Editor's note: Please send any news or stories for the Newsletter to [chuck\\_taricska@yahoo.com](mailto:chuck_taricska@yahoo.com).]

*Virtual Meeting available this month:*

### **Fire, Water, and Ice: Michigan's Geological Story**

**When:** Available to watch anytime (previously recorded)

**Presentation:** Join MSU paleontologist Danita Brandt for a virtual tour through Michigan's geologic history, from its fiery beginnings marked by volcanoes in the Upper Peninsula, through eons of inundation by a shallow, tropical sea, to the shaping of our modern landscape by glaciers during the last ice age. Learn what a Petoskey stone tells us about Michigan's ancient environment and the easiest way to tell a mammoth from a mastodon.

**Presenter:** Dr. Danita Brandt, Professor, MSU Dept. of Earth and Environmental Sciences

**Website:** <https://fb.watch/4-hxVdyDfo/>

## CLUB NEWS

**VACANCIES ON THE BOARD** The following positions need staffing. Please consider volunteering for your society and helping out. It's a nice way to get to know members.

**Treasurer** – Our steadfast Treasurer Elaine is looking to retire from her long tenure keeping the books, and we need someone to take over.

**Display Chair** - sets up the memorial displays at the club show and takes to other rock shows.

**Liaison Officer** – handles correspondence with other clubs and organizations, keeps tabs on P.O. Box mailings.

-Interested folks can speak to President Nate Krupp (nathan.krupp1@gmail.com), other officers, or one of the long- term members for job descriptions and time commitment.

**Newsletter:** If you have and club news or information you would like to pass along to the group, or any travel photos or trip notes you would like to share, please email Chuck Taricska at [chuck\\_taricska@yahoo.com](mailto:chuck_taricska@yahoo.com) and he will make a note in the newsletter.

## INTERESTED IN THE LAPIDARY JOURNAL?

MEMBERS,

The magazine started publication in 1947 covering where to find, how to polish and make numerous items. I have a collection of issues starting in the 1960s thru 2004 when they stopped publication and the first issue of its replacement, Jewelry Artist.

I propose to let members use them as a lending library by taking out one or two years issues at a time to enjoy. I also have an index book covering issues thru 1997? (if I can find it).

I know many of the long time members probably were subscribers but some new folks may not know of the magazine.

If you are interested let me know at [slab2make@gmail.com](mailto:slab2make@gmail.com)

Roger Laylin

FAGRADALSFJALL VOLCANO, located in the Reykjanes Peninsula, Iceland) recently started erupting lava and gave visitors quite a sight! Take a look at this drone video shot over the volcano showing the beautiful lava flows.

<https://www.youtube.com/watch?v=8haRjldJcnQ>

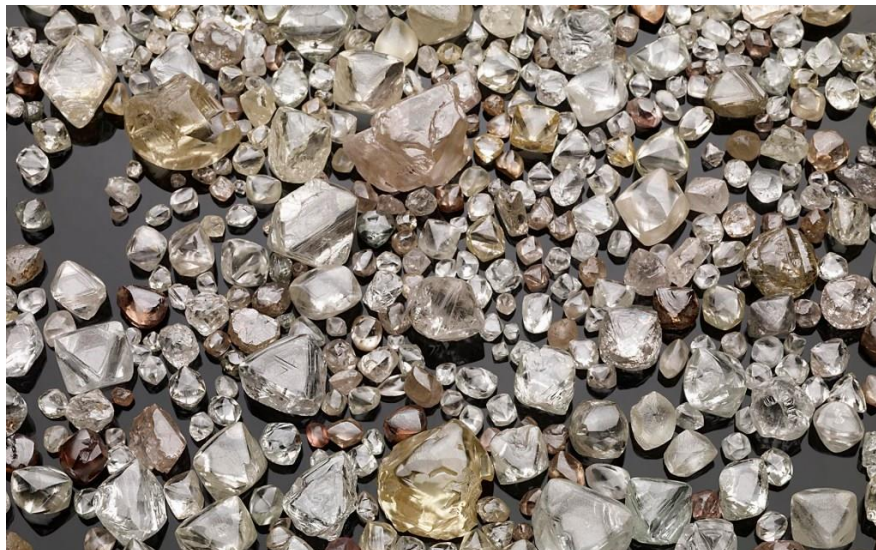
While we are talking about Volcanoes and lava flows, take a look at these pictures of the surreal hue of Indonesia's Kawah Ijen Volcano, which glows with an otherworldly blue lava at night. The mountain contains large amounts of pure sulfur, which has a relatively low melting point of 239°F and emits an icy violet color as it burns.



<https://www.geologyin.com/2014/06/spectacular-neon-blue-lava-pours-from.html>

## **Mineral Resource of the Month: Diamond**

*Donald W. Olson, mineral commodity specialist for the U.S. Geological Survey, has compiled the following information on diamond, the world's most popular gemstone, as well as one of the most useful industrial materials.*



Rough diamonds

Diamond is an extremely stable form of carbon: It is a material with superior physical properties due to the very strong covalent bonding between the carbon atoms. Diamond has the highest hardness and thermal conductivity of any known natural or synthesized material. In diamond, the carbon atoms are arranged in a rigid cubic crystal structure called a diamond lattice — it is this lattice that blocks impurities, thus giving diamond its colorless appearance.

Sometimes enough impurities can settle in the crystal lattice to cause the diamond to have color. The blue in a blue diamond, like the Hope Diamond, is caused by boron; the yellow in yellow canary diamonds is caused by nitrogen. In other cases, defects in the crystal lattice can make diamonds appear red, pink, orange or brown. Exposure to Earth's natural radiation can create green diamonds. And "black" diamonds are not really black, but rather they contain numerous dark inclusions that give them their black appearance.

People have used diamonds as decorative items since ancient times. Some of the earliest historical references can be traced to India 2,500 years ago. Diamond rings have been used to symbolize engagements since at least the 15th century in Europe, but they became most popular in the early to mid-1900s as a result of promotional advertising by the De Beers Company.

Diamonds that do not meet gem-quality standards for clarity, color, shape or size are used as industrial-grade diamond. Because it is the hardest substance known, diamond has been used for centuries as an abrasive in cutting, drilling, grinding and polishing. Industrial-grade diamond continues to be used as an abrasive for many applications. Diamond also has chemical, electrical,

optical and thermal characteristics that make it the best material available for wear- and corrosion-resistant coatings, heat sinks in electrical circuits, computing and other advanced technologies.

Natural diamonds were formed under high-pressure, high-temperature conditions in Earth's mantle. The diamonds were brought close to Earth's surface by deep volcanic eruptions of magma that cooled into igneous rocks called kimberlites and lamproites.

Diamonds are produced synthetically either by using a high-pressure, high-temperature process that simulates the conditions in Earth's mantle, or by using a growth technique called chemical vapor deposition (CVD), which transforms carbon into plasma that is then precipitated onto a substrate as diamond. CVD has been used for more than a decade to cover large surfaces with microscopic diamond crystals that are very hard and wear resistant. More recently, this process has been used to grow single diamond crystals. CVD diamond precipitates as nearly 100 percent pure and almost flawless. Some manufacturers have recently begun selling synthetic gemstone diamonds.

For more information on diamond and other mineral resources, visit:

<http://minerals.usgs.gov/minerals>.

### **More Online Geo Resources:**

American Institute of Professional Geologist – Michigan Section – <http://mi.aipg.org/newsletters.htm>

Eastern Section AAPG - <https://www.esaapg.org/>

EGLLE Calendar of Events - [https://www.michigan.gov/egle/0,9429,7-135-3308\\_3333---,00.html](https://www.michigan.gov/egle/0,9429,7-135-3308_3333---,00.html)

Flint Rock and Gem - <https://flintrockandgem.org/events>

Michigan Association of Environmental Professionals - <https://www.maep.org/>

Michigan Basin Geological Society – [www.mbgs.org](http://www.mbgs.org)

Michigan Clean Water Corps - <https://micorps.net/about/>

Michigan Mineralogical Society - <https://www.michmin.org/>

Mid-Michigan Rock Club - <http://www.midmichrockclub.com/?Page=1>

Midwest Mineralogical and Lapidary Society - <http://www.mmls.us/>

Society of Petroleum Engineers - <https://www.spe.org/events/calendar/>

## UPCOMING SHOWS

**May 15-16: NORTH OLMSTED, OH** Parma Lapidary Club Annual Show. 11-5 each day. Soccer Sports Plex, 3515 Lorain, North Olmsted, OH 44070.  
[parmalapidaryclub@gmail.com](mailto:parmalapidaryclub@gmail.com); [www.parmalapidary.com](http://www.parmalapidary.com)

### In Memoriam: Merle "Archy" Bryce Ammerman

Merle "Archy" Ammerman, 83, passed away on Thursday, April 1, 2021 in Lansing, Michigan. A lifelong Mason resident, Archy was born June 5, 1937 to Elwin and Melba (Rose) Ammerman. He used his passions and hobbies as fuel for a number of successful businesses in the Mason area, including Archy's Photos, Archy's Rock Shop, and the Lansing-Mason Ambulance Service.

He was preceded in death by his wife, Joan (Sterle) Ammerman; his son, Michael Ammerman; his parents; and his siblings, Vonn Ammerman and Patty Baker. Archy will be lovingly remembered by his sons, Kenneth, Kevin (Lea) and Kyle Ammerman; grandchildren, Brittany, Kevin, Zachary, Gennifer, Lonnie, and Henry; great-grandchildren, Seven, Alexander, Mya; and his brother, Charlie (Marlene) Ammerman, several nieces and nephews, and the many others he considered family.

Visitation will be held on Sunday, April 25, 2021 from 1pm until 5pm at Gorsline Runciman Funeral Homes, Mason Chapel, 216 S. Jefferson St. in Mason. A private family service will be held, with interment to follow in Maple Grove Cemetery in Mason on Monday.

In lieu of flowers, memorial contributions may be made to Michigan Gem and Mineral Society or the Central Michigan Lapidary and Mineral Society